



Margaret Abramshe



# Margaret Abramshe

## – *Saint George Utah*

- BFA, University of Colorado
- BA Art Education, Florida International University
- MA, Visual Arts; University of Northern Colorado
- Retired Art Instructor (K – 12) Jeffco Public Schools
- Juried Artist Member SAQA
- Represented by Art Broker Utah
- Juniper Sky Gallery

# Art Quilt

*"a creative visual work that is layered and stitched or that references this form of stitched layered structure."*

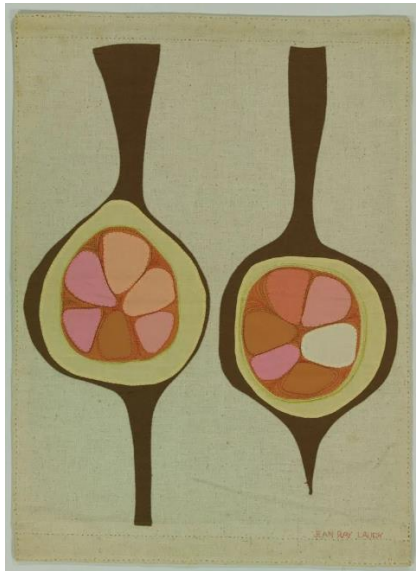
Our vision is that the art quilt is universally respected as a fine art medium





# Where do (art) quilts belong?

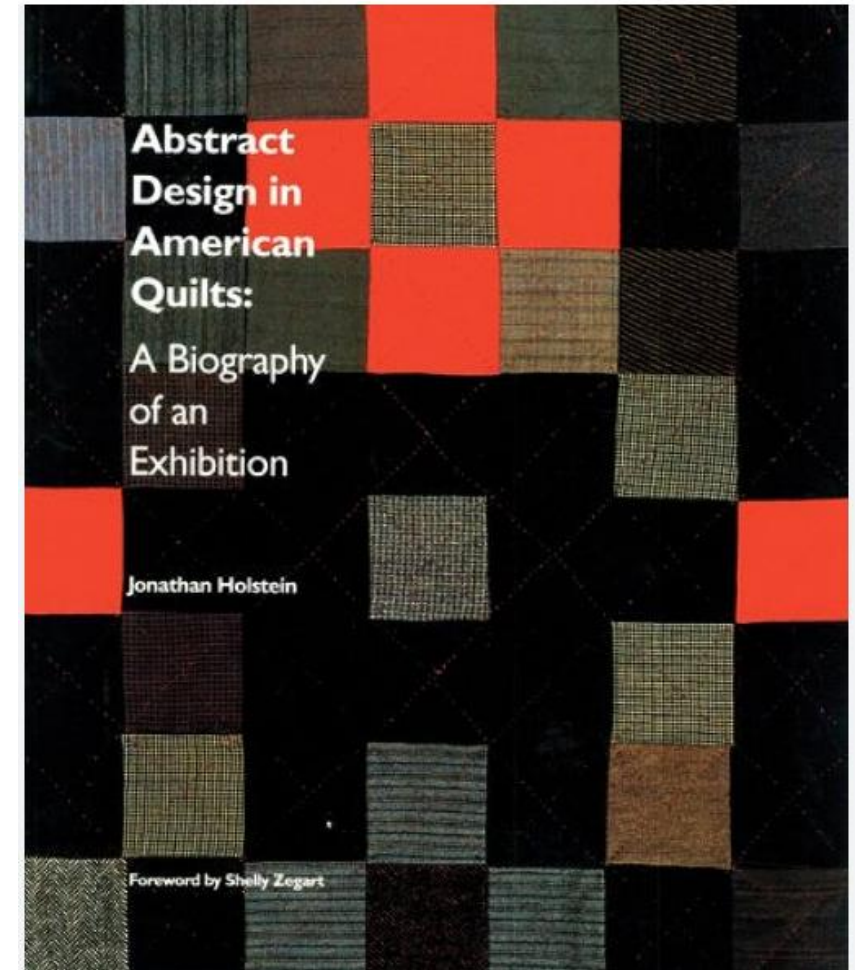
Jean Ray Laury in 1956 submitted a quilt as part of her portfolio at Stanford. It is thought to be the first “Art Quilt”



Jean Ray Laury's 1956 quilt, "Two Pods" is in the collection of the International Study Center & Museum, Lincoln Nebraska. Photo courtesy of the International Study Center & Museum.

## The Whitney Exhibition

In 1971, the Whitney Museum of American Art, New York, New York mounted the first comprehensive exhibition of quilts to be seen in a major museum—the now-famous *Abstract Design in American Quilts*. Instead of displaying the quilts as historical objects that belonged on beds, the museum treated them as contemporary art to be mounted on the walls







# Faith Ringgold

Ringgold's vehicle is the story quilt—a traditional American craft associated with women's communal work that also has roots in African culture. She originally collaborated on the quilt motif with her mother, a dressmaker and fashion designer in Harlem.





Bisa Butler's portrait quilts vividly capture personal and historical narratives of Black life.

She strategically uses textiles—a traditionally marginalized medium—to interrogate the historical marginalization of her subjects while using scale and subtle detail to convey her subjects' complex individuality. Together, Butler's quilts present an expansive view of history through their engagement with themes such as family, community, migration, the promise of youth, and artistic and intellectual legacies. *Bisa Butler: Portraits* is the first solo museum exhibition of the artist's work and will include over 20 portraits.

## Chicago Art Institute: February – September 2021

### FEATURED IN THE EXHIBITION



**The Safety Patrol, 2018**  
The Art Institute of Chicago, Caviggia Family Trust Fund. © Bisa Butler



**Anaya with Oranges, 2017**



**Southside Sunday Morning, 2018**  
Private collection. Photo by Margaret Fox. © Bisa Butler



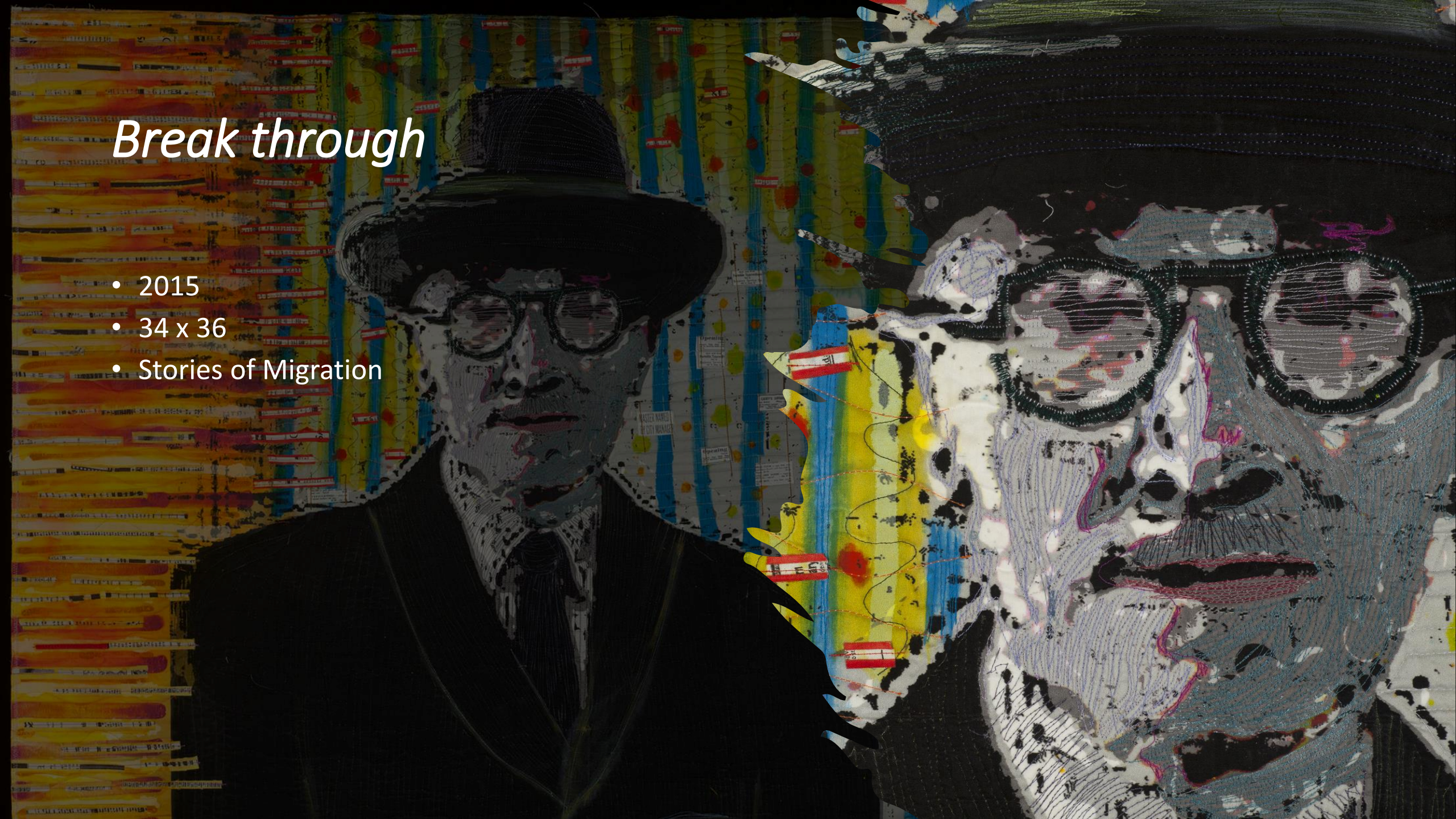


*Where I started*



# *Break through*

- 2015
- 34 x 36
- Stories of Migration





# Working toward a goal: Exhibitions

2019	2018	2017	2016
Road to California	Road to California	H2oh	Stitch Dialectic
Forced to Flee		Under the Western Sun	
Rhapsody, Visions	Guns: Loaded	New Legacies	Above and Beyond
AQS Quilt Week, Spring	Conversations	Sacred Threads/ Sacred Threads	
Paducah	Artist as Quiltmaker XVIII	traveling	Stories of Migration
Sacred Threads		St George Arts "The View"	
Sacred Threads Travelling	New Legacies	Pathfinders	Turmoil
Exhibition	Landscape - Houston	Untethered Thread	
Twisted Nature of Things	World of Beauty,	Conversations, Visions Art Museum	New Legacies
Evolving Perceptions	Quilt Fest	Voices, Quilt Alliance	Quilt=Art=Quilt
37th Annual New Legacies		Art Quilts	
Houston "World of Beauty"	Fiber Arts Quilt=Art=Quilt,	National Small Works	
Excellence in Fibers V		2017 Excellence in Fibers	

# Exhibitions

## 2021

Fabric Portraits, Special Exhibition, Mancuso Spring Showcase (Virtual)

Art Quilts 2, California Heritage Museum, Jurors Tobi Smith, Michael Trotter, and Helen Harding

Microscape, Internation Quilt Festival Houston, Juror Linden Gledhill

## 2020

Road to California, Quilters Showcase, Ontario CA

“Aloft” SAQA Juried Art Exhibition, Juror Mary Edna Fraser

“Opposites Attract” SAQA Juried Art Exhibition, Juror Gail M. Brown

AQS Daytona Beach Florida (cancelled)

AQS Paducah Kentucky (cancelled)

AQS Lancaster Pennsylvania (cancelled)





## Sense of Wonder

36 x 40

On behalf of the exhibitions committee, we are delighted to announce that your piece - **A Sense of Wonder** - was one of 42 pieces selected for SAQA Global Exhibition Fierce Planets by jurors Dr. Sabine Stanley, J.D. Talasek, and Dr. Denis Wirtz.

Fierce Planets will premiere at the Louisiana State University Museum of Art in April 2024.



# Changing Directions

- **Juried Exhibitions  
2023**

*"Mysteries of Nature" Mesquite Fine Arts Gallery, Mesquite NV*

*"Women Artists of the Desert" Glen Blakely Gallery, St George, UT*

*"Way of Water", Art Provides Gallery, St George UT*

*"Dreamscapes", Red Cliff' Gallery, St. George, UT*

*"Splash of Color", Red Cliff Gallery, St George UT*

*"Diversity Lives Here", Glen Blakley Gallery, St George UT*

*"Street Art", SAQA Global Online Gallery*

*"Reflections on Spirituality", SAQA Global Online Gallery*

*"Body Language", SAQA Global Online Gallery*

*"Diversity Lives Here", Titled Kiln, St George Utah*

*"Splash of Color", Red Cliff Gallery, St George Utah*

*"Capturing the Light", Red Cliff Gallery, St George Utah*

*"Nature in Abstraction", Kayenta Center for the Arts, Ivins Utah*



---

Photo

---

Printed

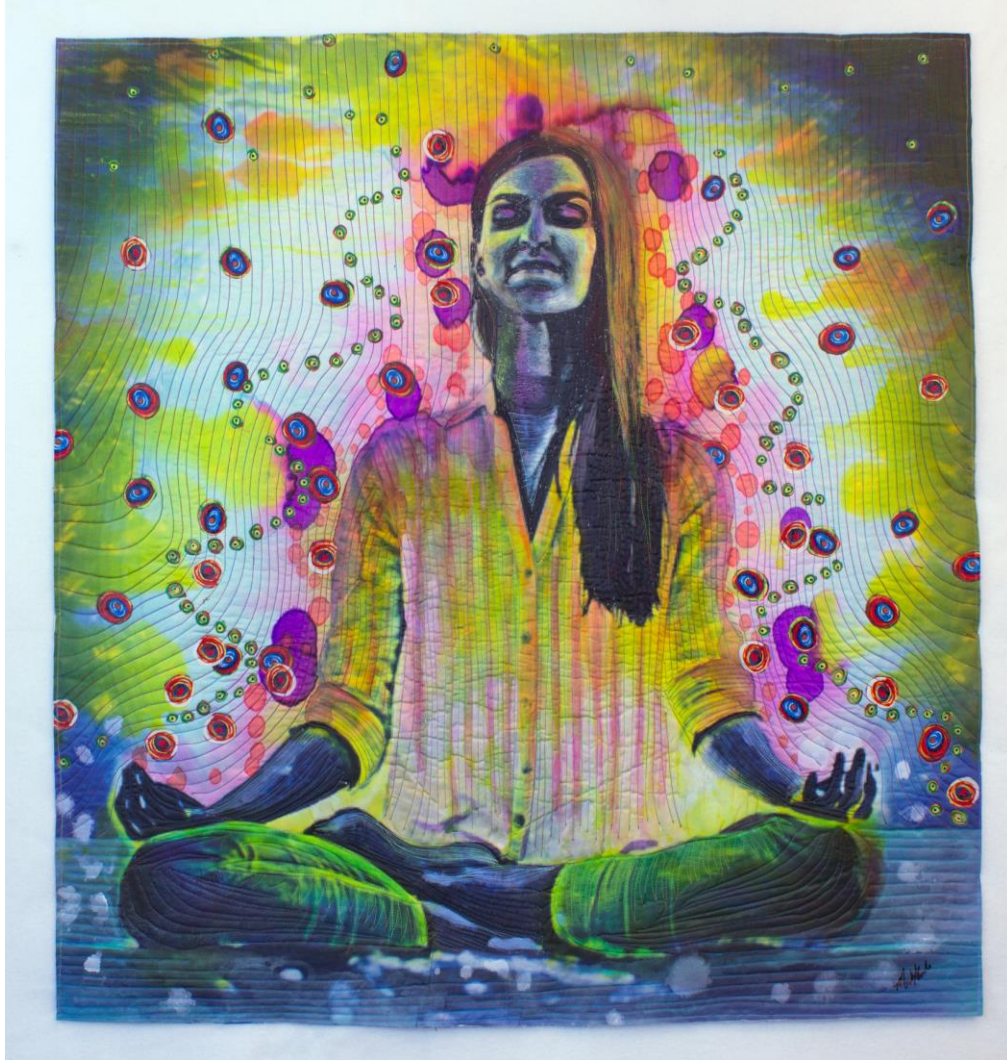
Painted

Layered

Stitch

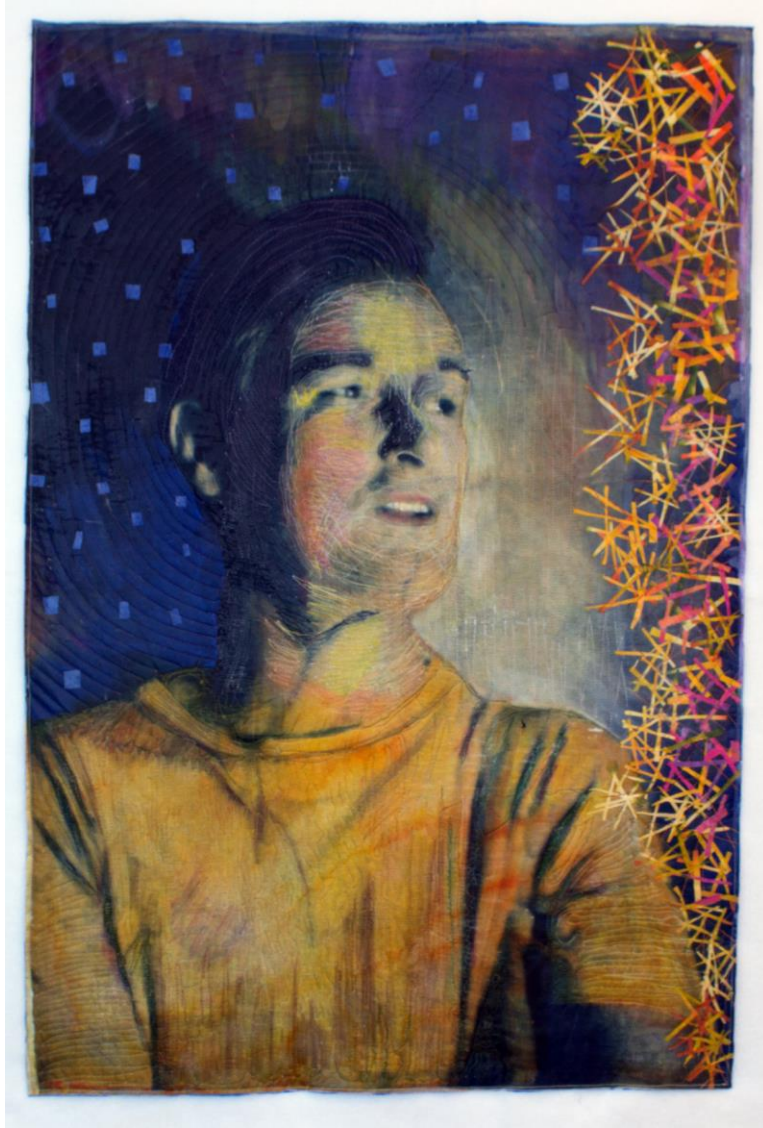


# Stock Image Creations

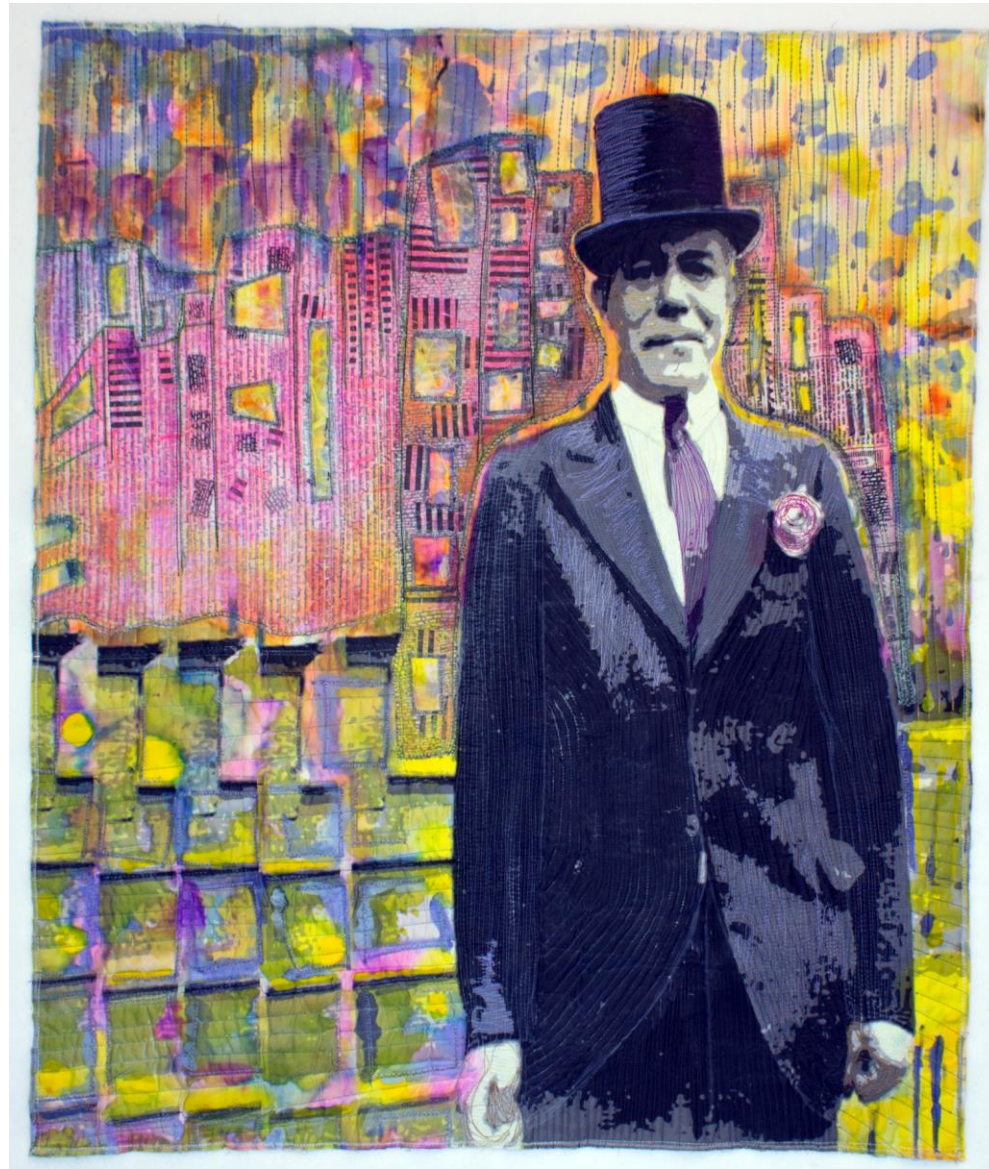




# Vintage Portraits

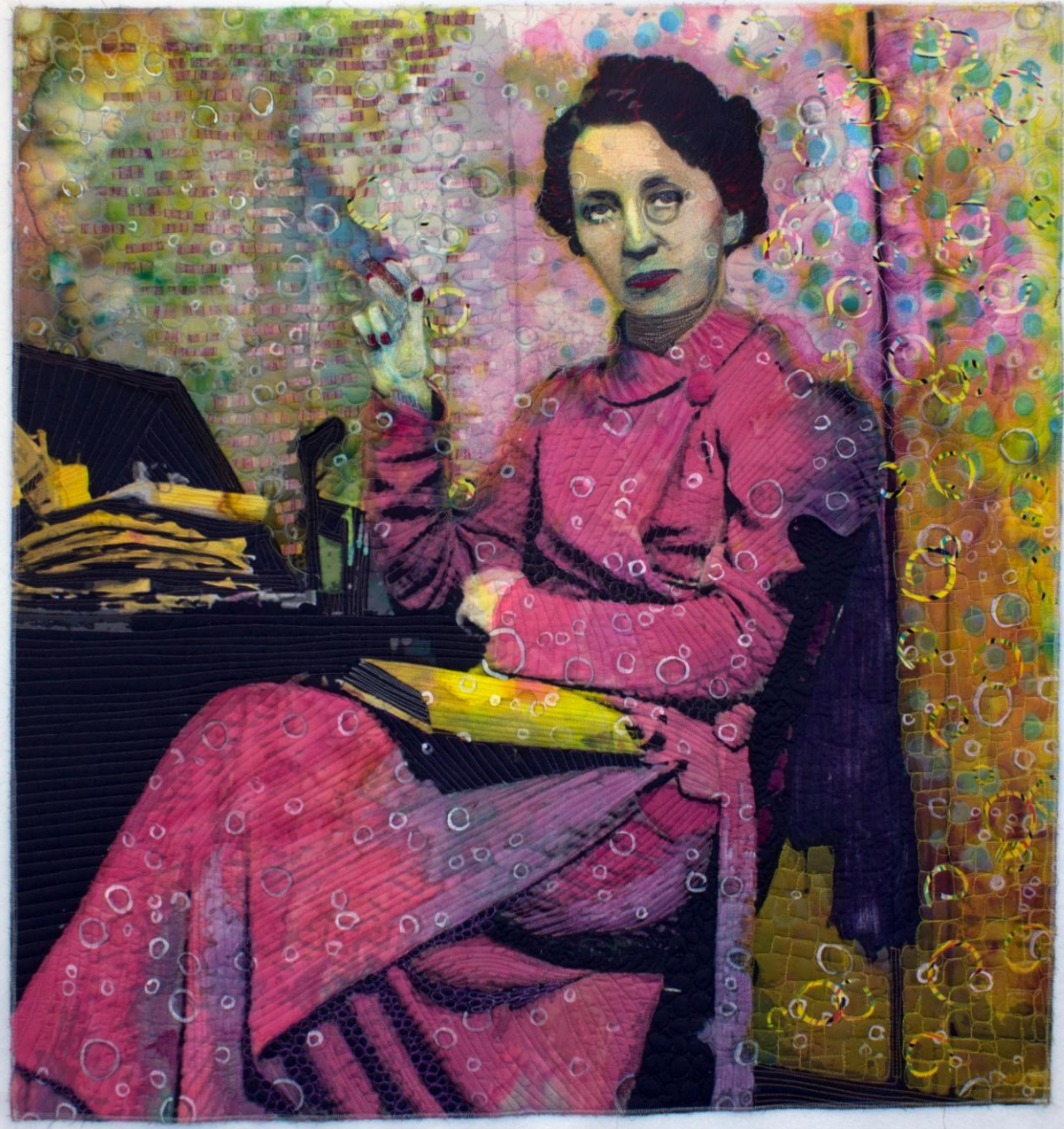


Tom \* 2016 (34 x 24)



Pallbearer  
2015  
(33 x 28)





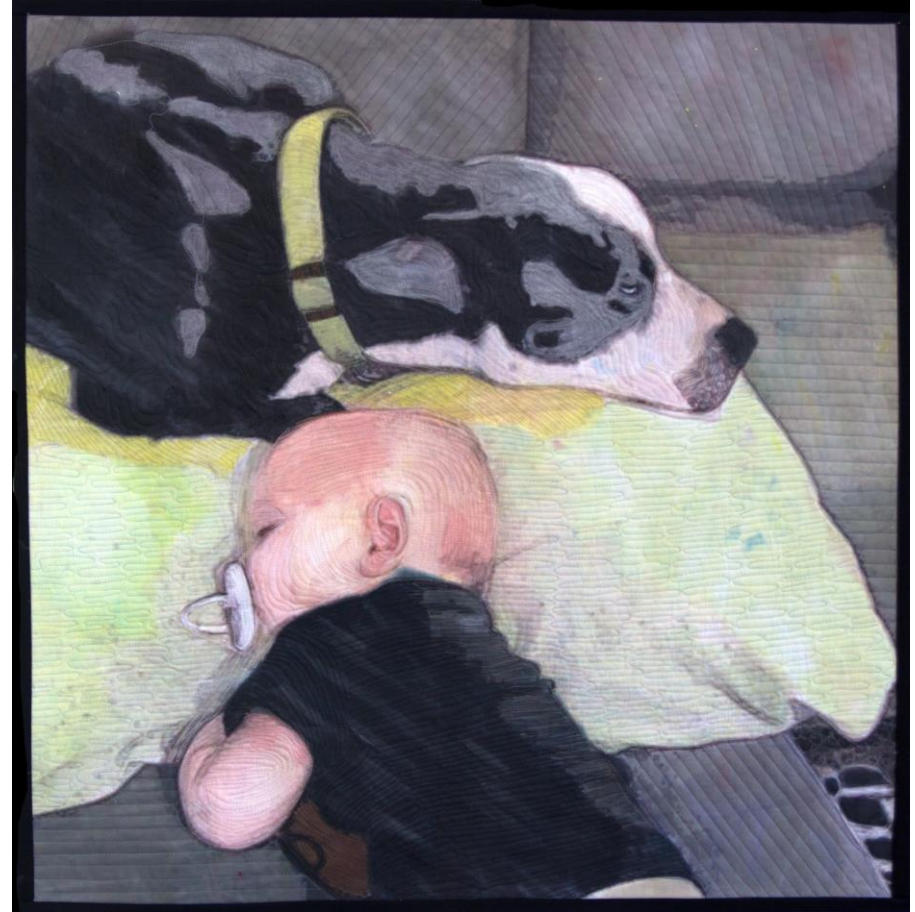
Aunt Gin 2016 (32 x 34)

*Travelling with Evolving Perceptions*

**Cover of Art Quilting Studio - Spring 2020**



# Family



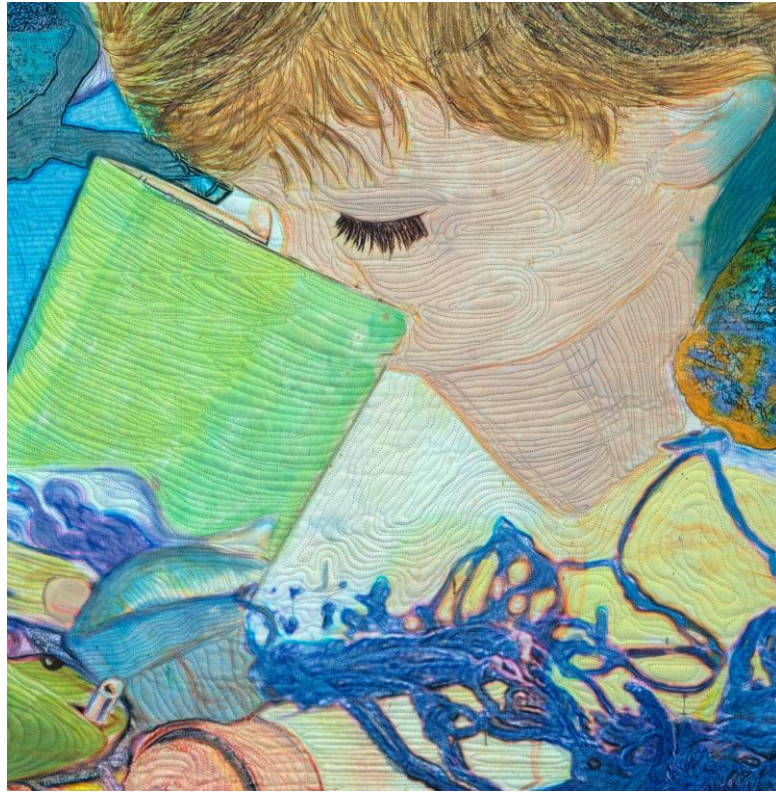
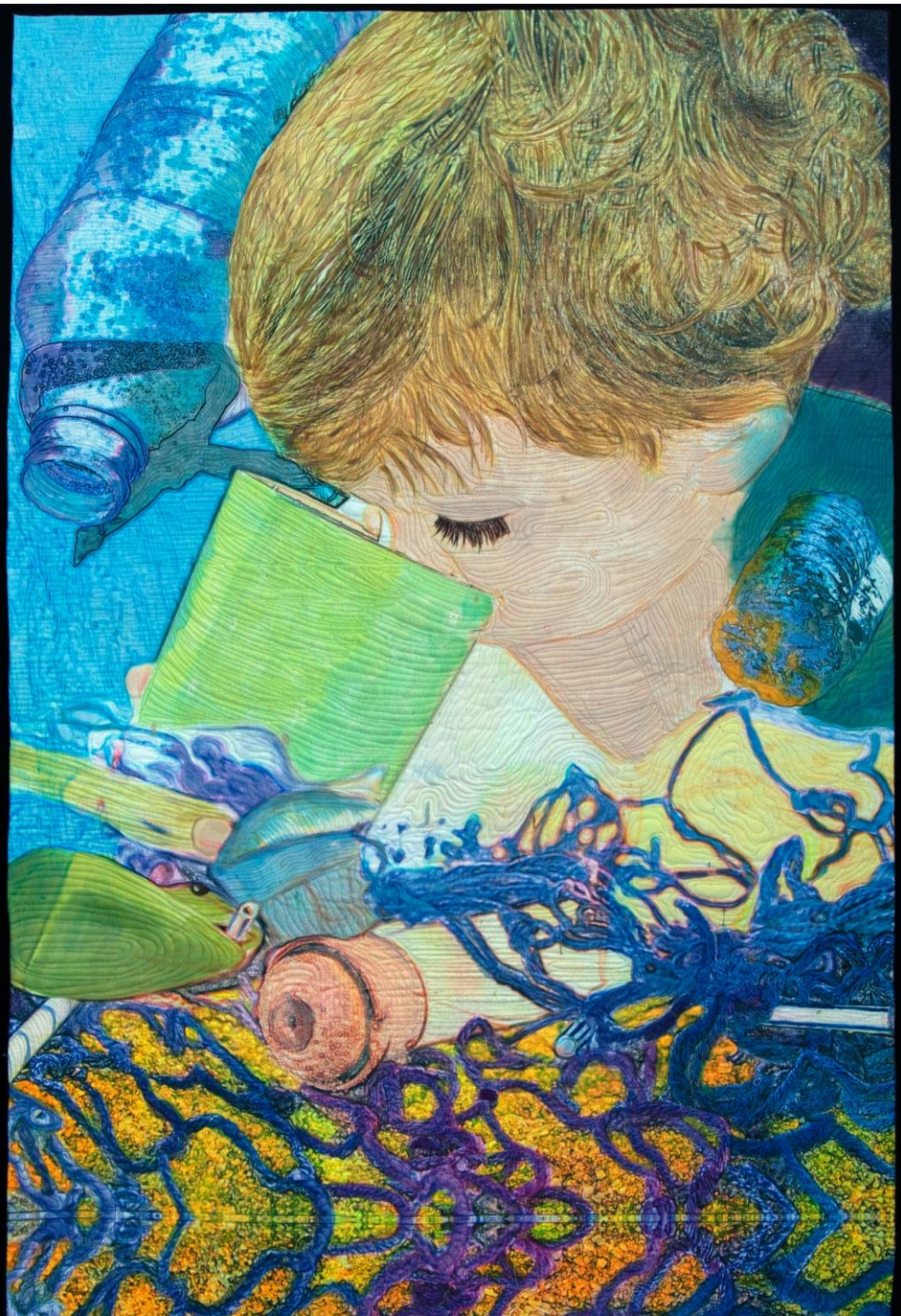




Travel

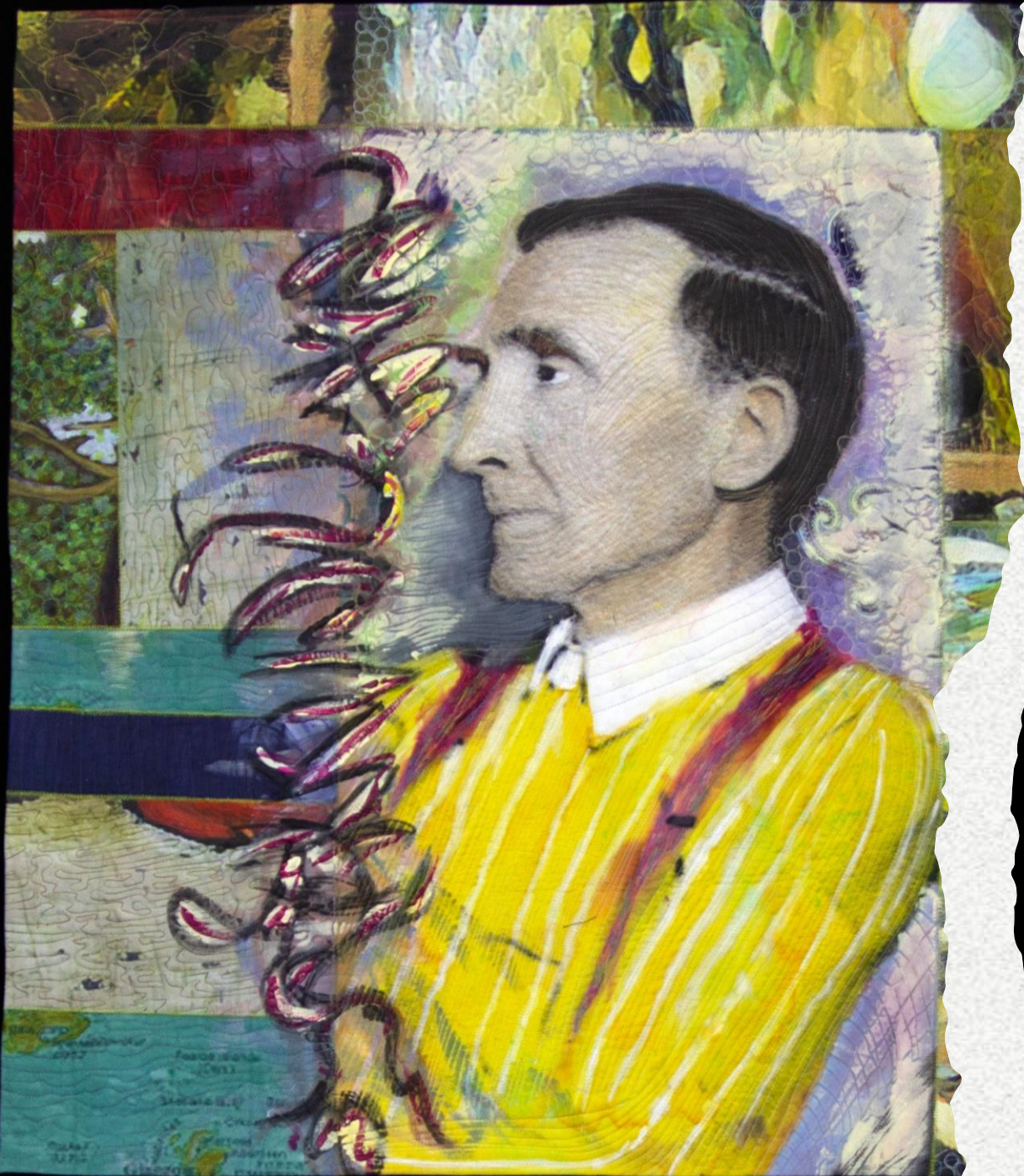


# Digital Collage



Plastic Ocean  
52 x 35



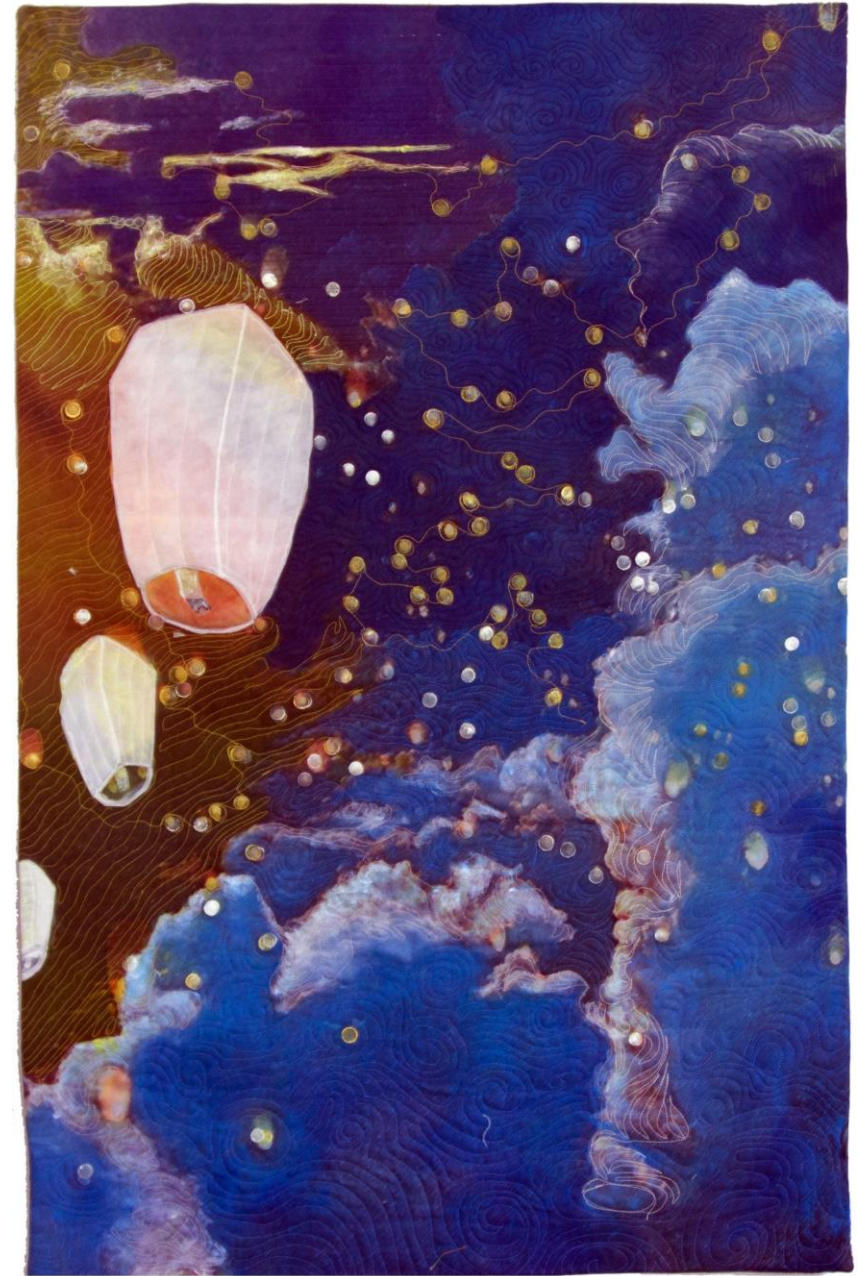


# Cut Ups

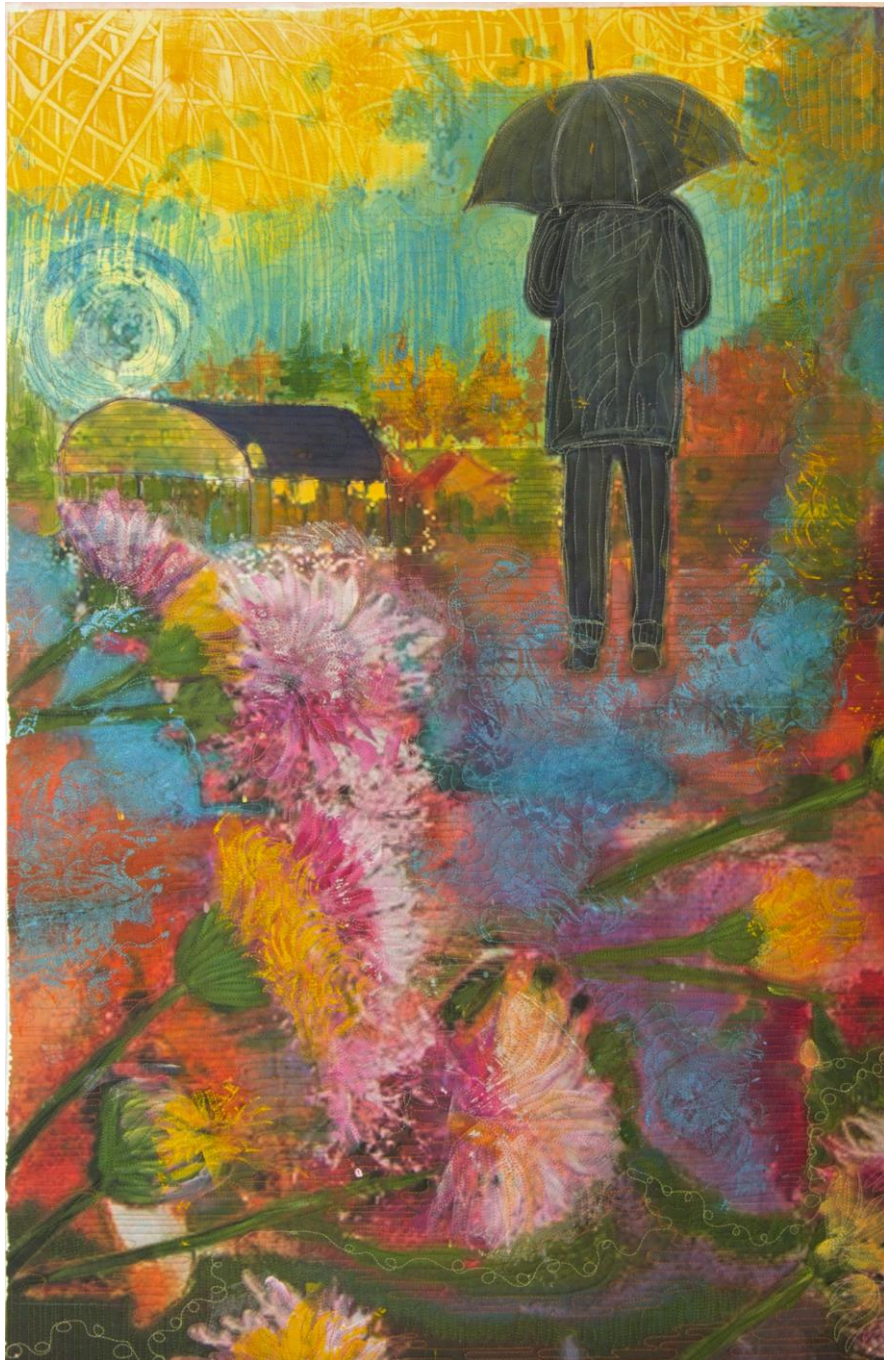


# Sketchbooks and Paintings

Sky Lanterns  
49 x 32



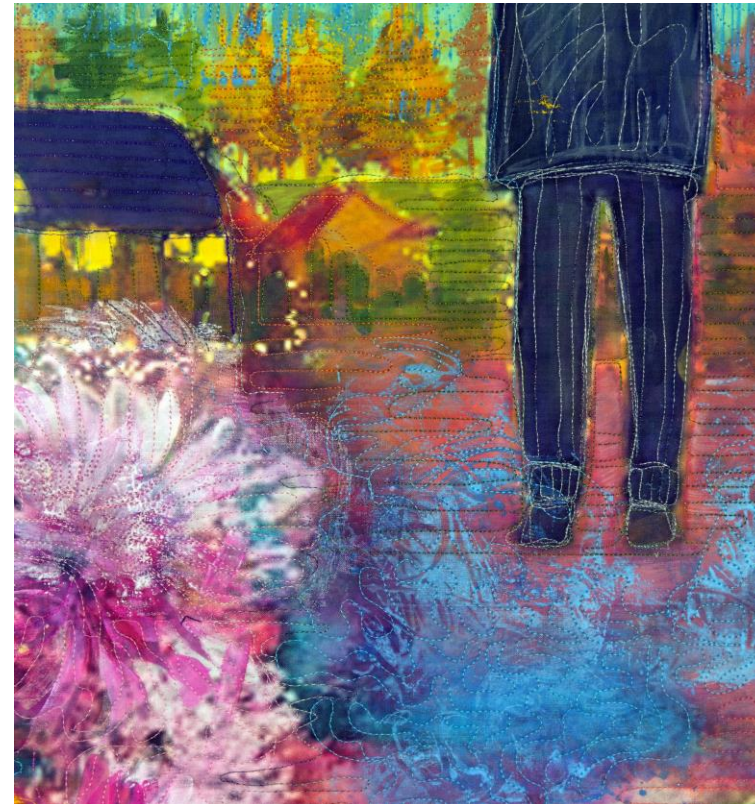




# Mono Printing

After the Rain

38 x 25





# Library of Congress



- World War, 1939-1945
- Shepherds
  - Horses
  - Dogs
  - Mountains
  - United States--Montana

•**Library of Congress Control Number**

•2017878800

**Reproduction Number**

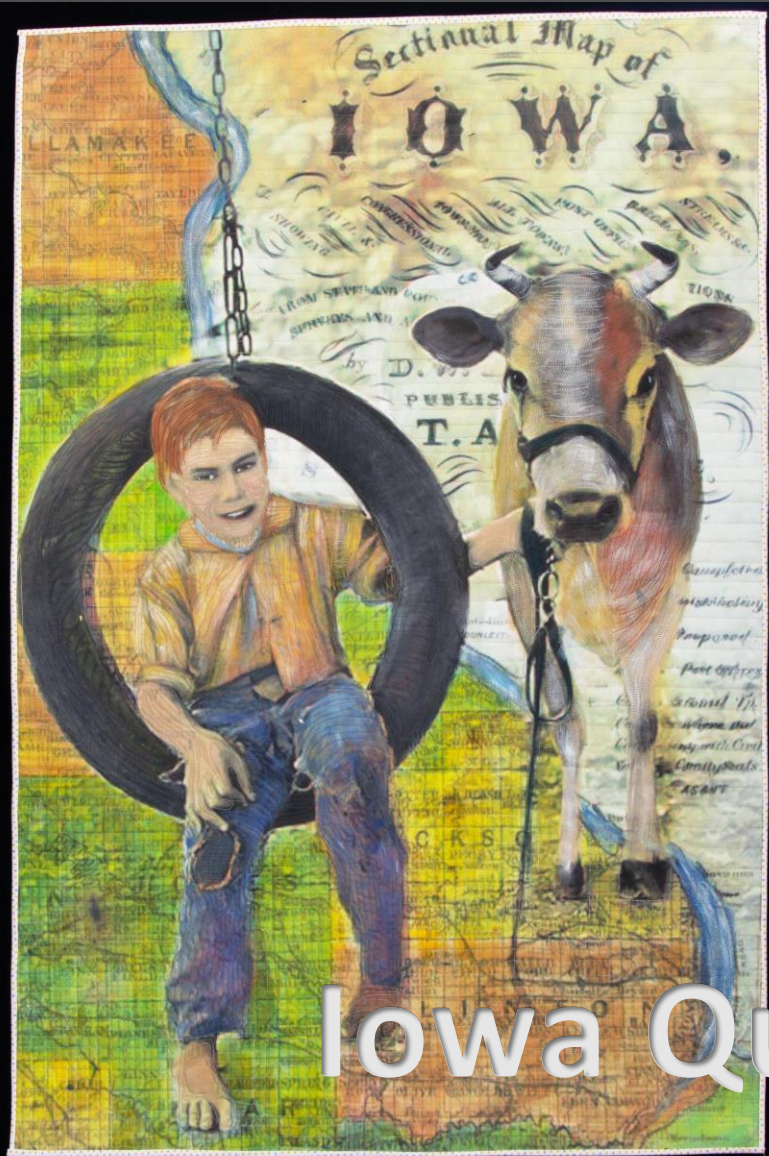
•LC-DIG-fsac-1a35022 (digital file from original transparency) LC-USW361-847 B (color film copy slide)

•**Rights Advisory**

•No known restrictions on publication.







Iowa Quilt Museum



DNA

Juried in

“Microscape”

SAQA Global  
Exhibition

36 x 36

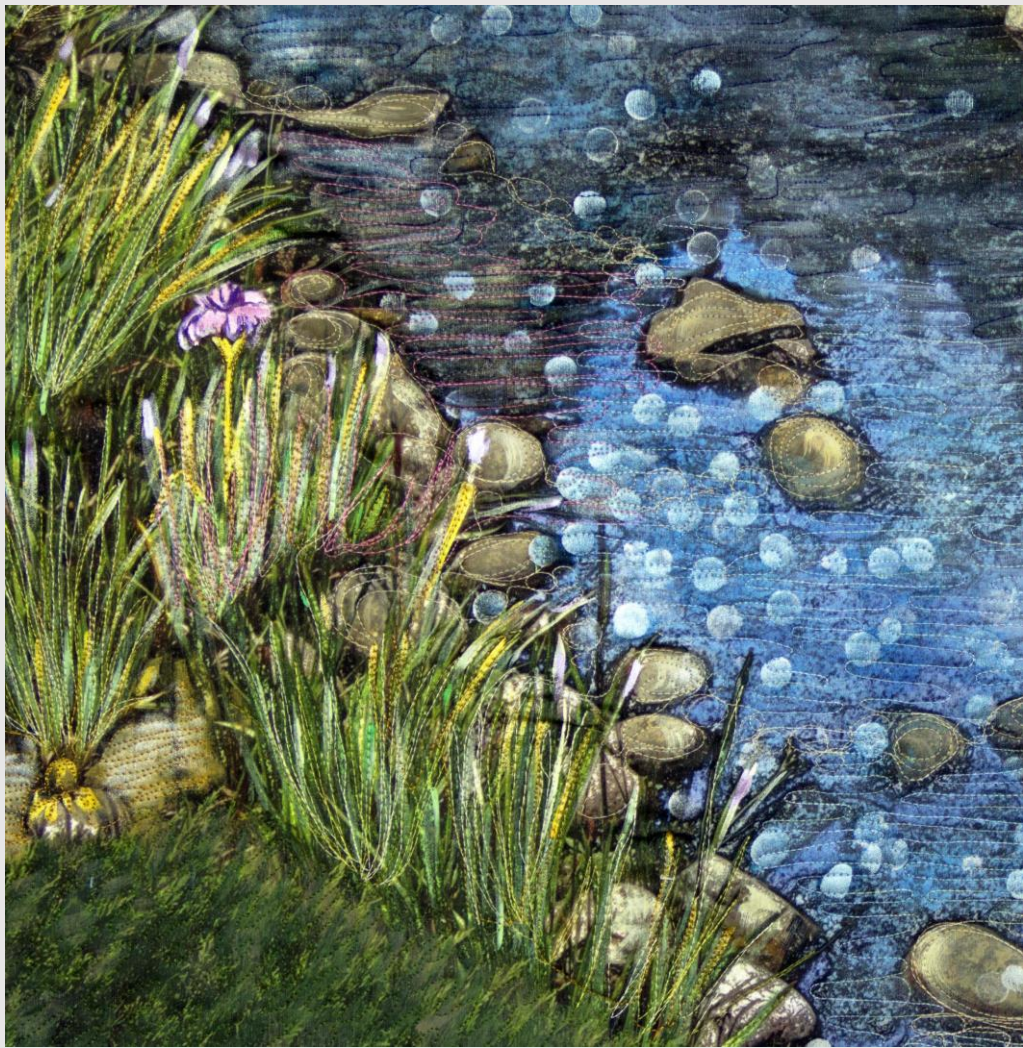
2020

1. Iphone
2. App Image Merge
3. Photoshop
4. Spoonflower
5. Paint in Studio
6. Quilted

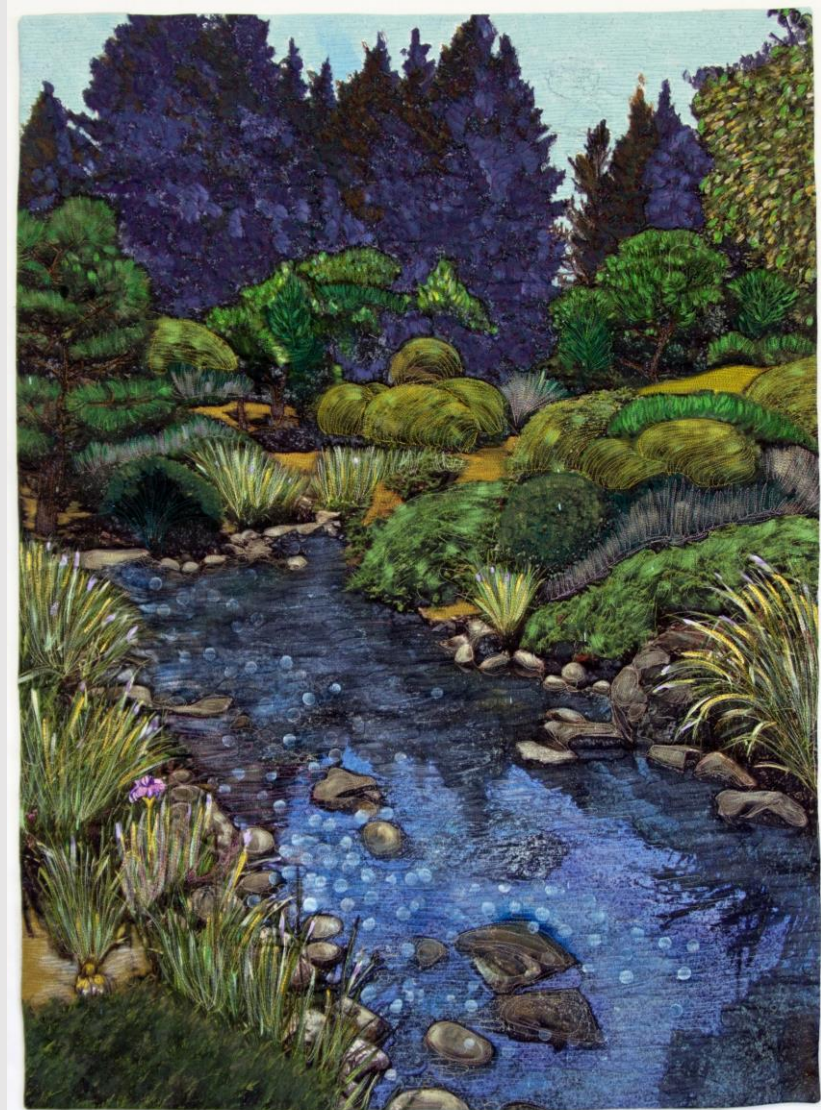


SOLD





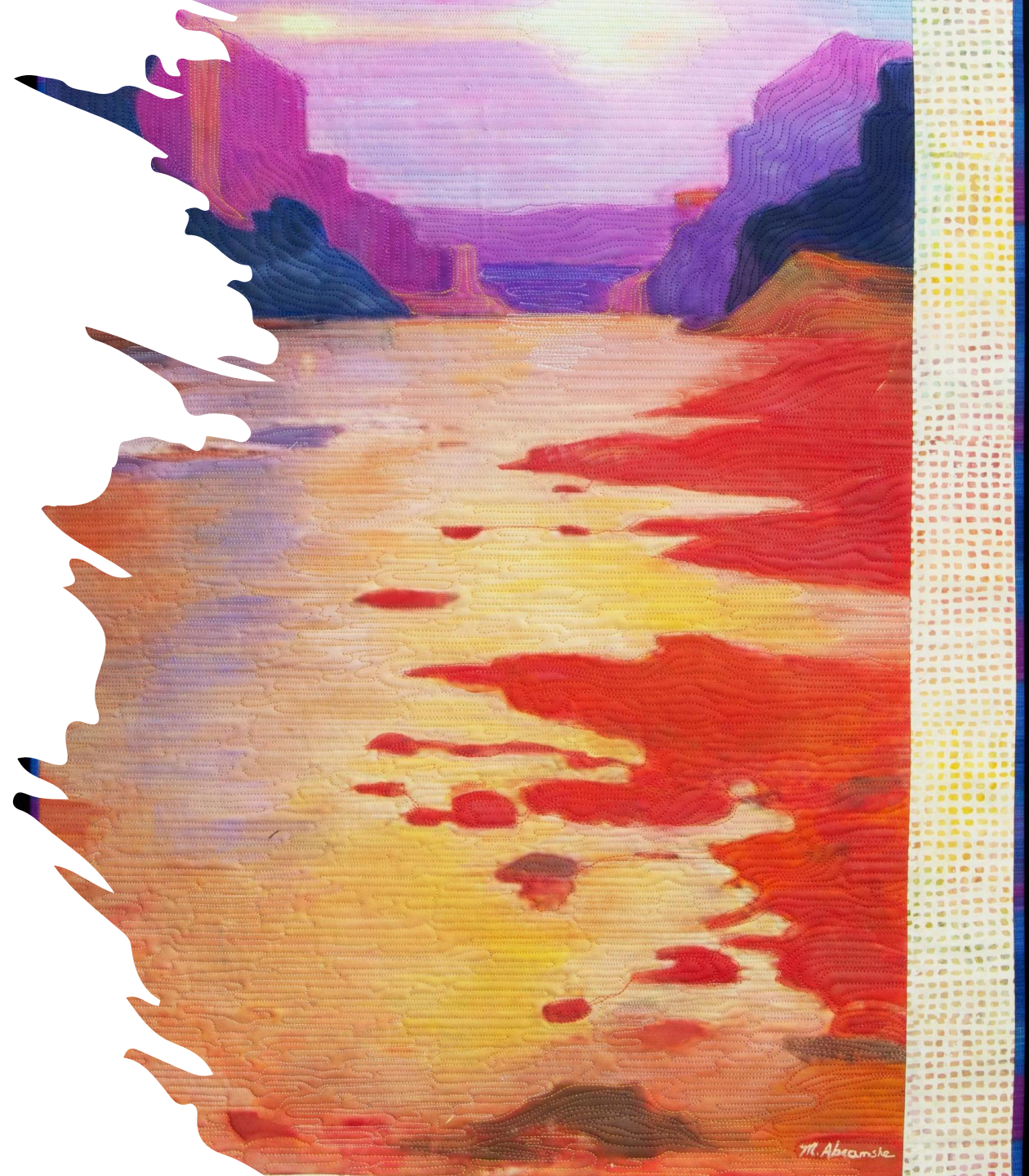
At Dusk 42 x 32



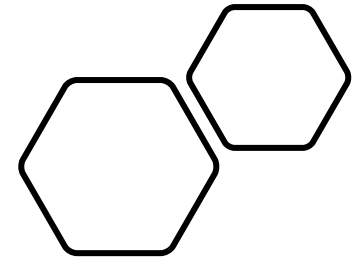
SOLD



Juniper Sky Gallery  
Kayenta Arts Village









"Be Present" • 52" x 35"

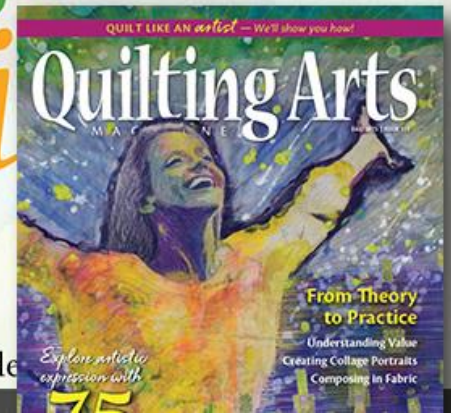


# Elements of Design for the *Art Quilt*

A beginner's guide

by Margaret

In my role as an art teacher, getting students



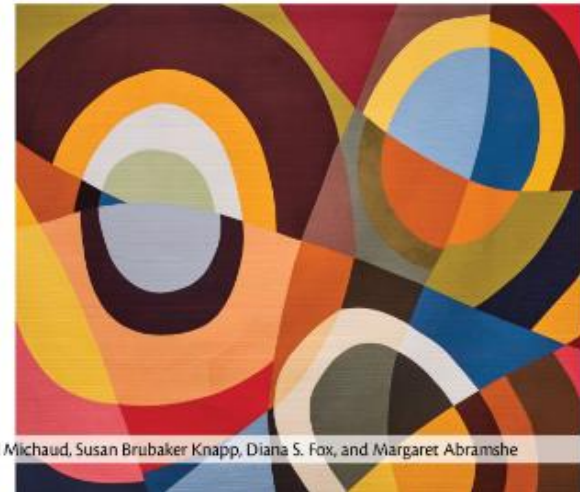
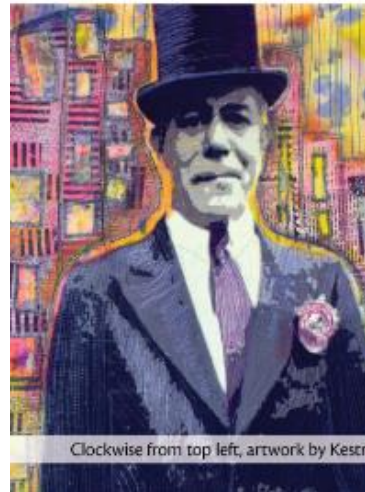


# Quilting Arts TV



## Quilting Arts TV

Projects and How-tos from Quilting Arts TV Series 3000



Clockwise from top left, artwork by Kestrel Michaud, Susan Brubaker Knapp, Diana S. Fox, and Margaret Abramshe





## Paint Photo & Fiber



Deborah Hussey - Wool Sculpture

Deena Millicam  
Stephen Sandau  
Margaret Abramshe  
July 31-August 28

220 N 200 E  
Saint George Utah  
M - F / 9am - 5 pm



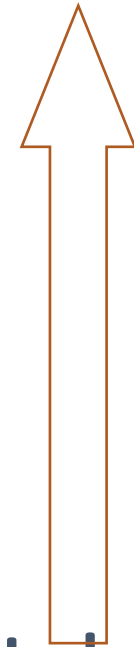




## Merging Lines: The Art of Margaret

- **Exhibitions – In Saint George**  
Merging Lines, with sculptor Mike Raines, Saint George Art Museum
- Layered and Stitched , solo exhibit, Glen Blakely Gallery
- Paint, Photo and Fiber, with Deanna Miller, Red Cliff Gallery





Uploading  
an Image  
to Spoonflower



## Open Spoonflower Account

Go To: <https://www.spoonflower.com/login>

You will need to fill in the following information:

- ✓ First Name
- ✓ Last Name
- ✓ Screen Name (This will be your shop name if you decide to become a seller)
- ✓ Email
- ✓ Password
- ✓ Check to receive emails (optional)
- ✓ Agree to terms of service.



To upload a design:

- Login
- Choose Design and Sell from top menu bar
- From Drop Down Select Upload
  - Choose file from your computer
  - Confirm copyright by check box
  - Upload your files
  - (\*your file must be less than 40mb)





All Designs

For Sale

Not For Sale

Select a Collection



#### Actions:

- Make Public
- View All Products
- Upload Revision
- Download Original
- Delete Design
- Enter A Challenge

Go To Design Library

My Design Challenges

#### Rainy-Day-in-New-York



Your design is available on 20+ products,  
such as throw pillows and blankets.

All home decor products inherit your fabric size settings

Fabric Wallpaper

#### Repeat



#### Design Size (150dpi minimum)

Smaller

Bigger

25.80in x 33.00in, 150 pixels/inch, Basic [Change DPI](#)

#### 1. Choose a Fabric

Petal Signature Cotton



#### 2. Choose a Size & Amount

1

Fat Quarter (21" x 18")

QUANTITY



Save Changes

Note: Saving also affects your [shopping](#) and [all products](#) pages (whether public or private).

Add to Cart



private.  
[Start](#) | [Learn More](#)

We have updated the Seller's Agreement effective 12/18/23. Your use of the site on or after that date will be subject to the updated Seller's Agreement. Review [here](#).

All Designs

For Sale

Not For Sale

Select a Collection ▼



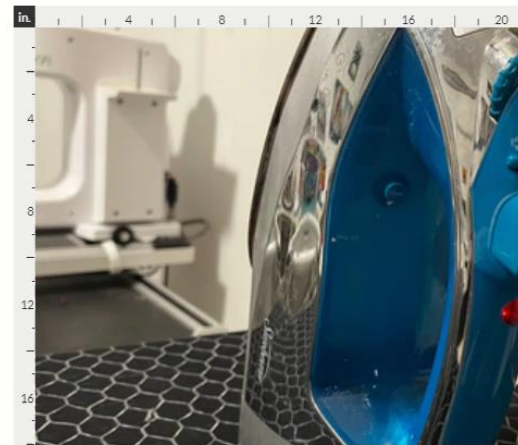
#### Actions:

- Make Public
- View All Products
- Upload Revision
- Download Original
- Delete Design
- Enter A Challenge

[Go To Design Library](#)

[My Design Challenges](#)

Iron



Your design is available on 20+ products.

Fabric Wallpaper

#### Repeat



#### Design Size (150dpi minimum)

Smaller

Bigger

26.88in x 20.16in, 150 pixels/inch, Basic [Change DPI](#)

#### 1. Choose a Fabric

Petal Signature Cotton ▼

??

#### 2. Choose a Size & Amount

1

Fat Quarter (21" x 18") ▼

QUANTITY

??

Save Changes

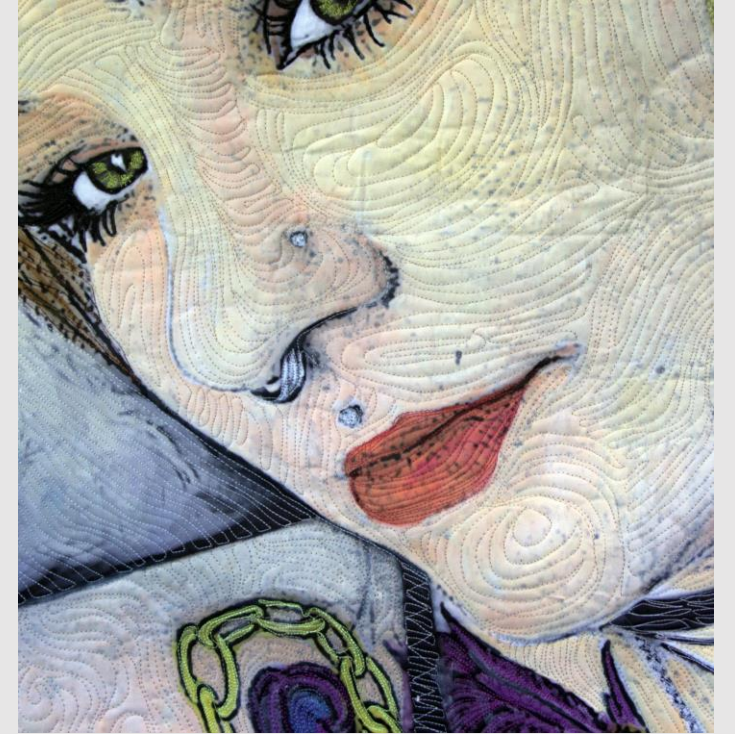
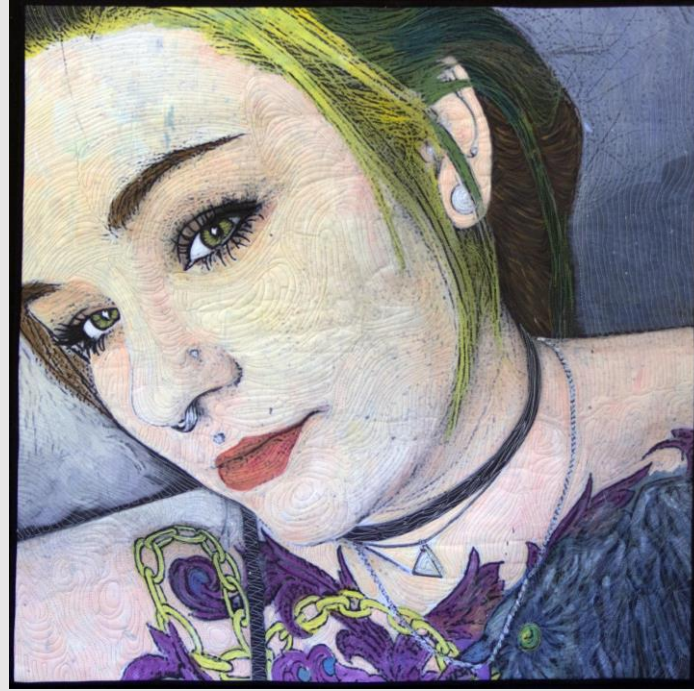
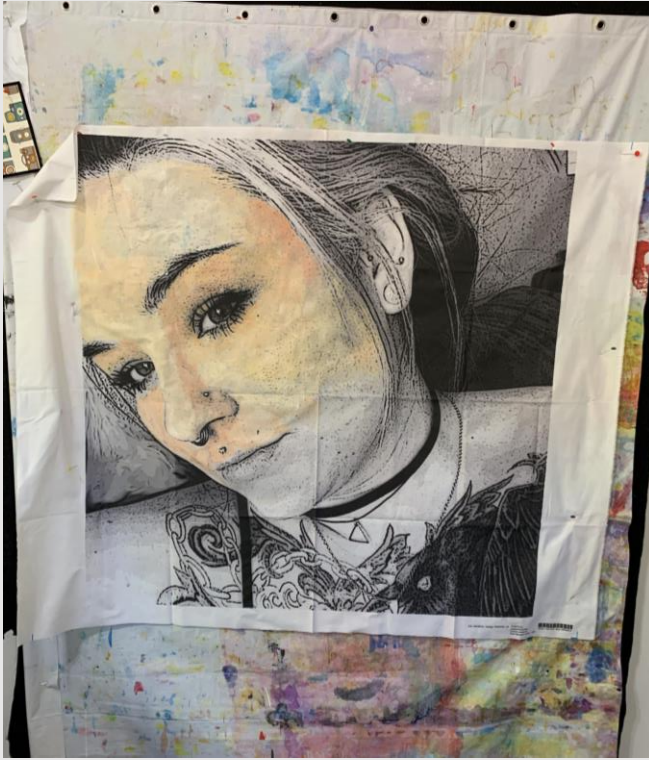
Note: Saving also affects your [shopping](#) and [all products](#) pages (whether public or private).



When the  
Fabric Arrives



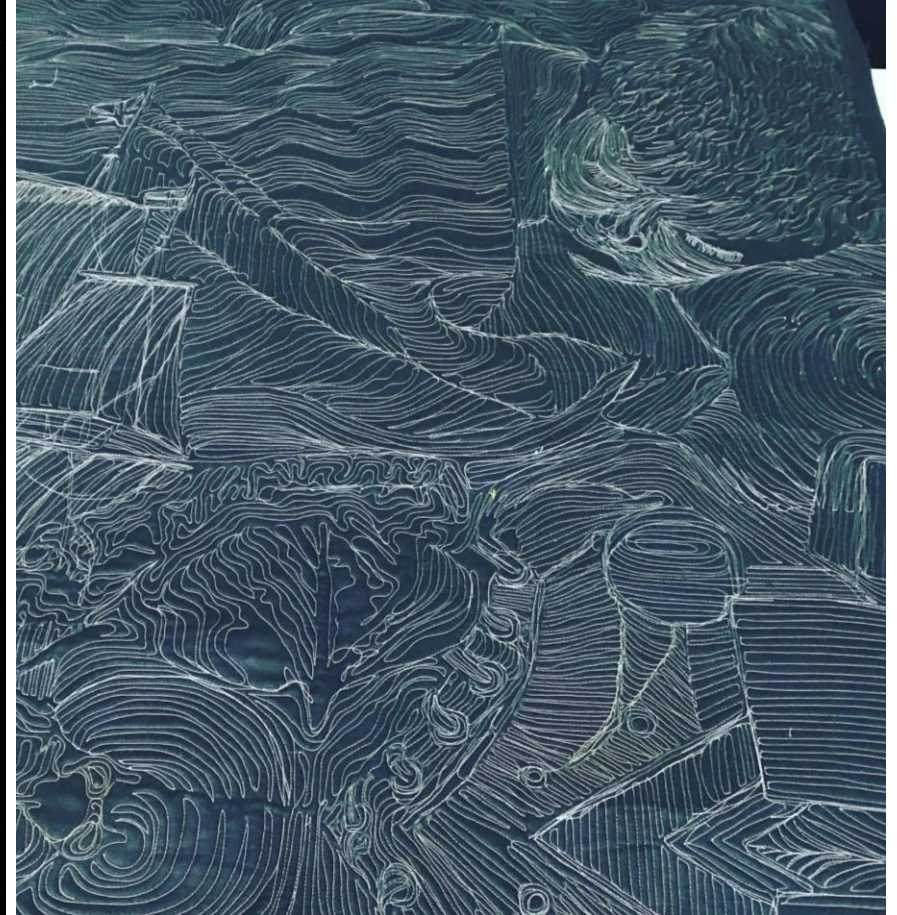
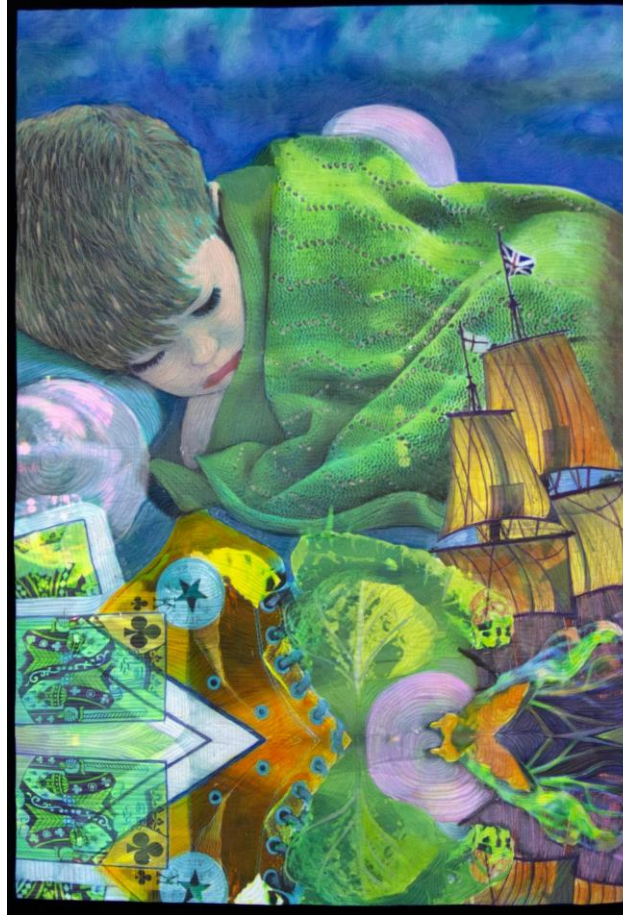




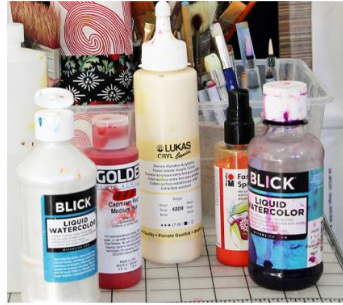
Adding Layers of VERY thin color, the surface is painted completely.  
Any media I would use on watercolor paper is up for grabs.



# Shoes and Ships







# Studio Tour







Bernina 820

Kohala Grand Quilter Table

HQ Sweet Sixteen mid arm

HQ Simply Sixteen Long Arm small frame

Superior Threads bottom line in the bobbin

Top Threads Isacord, Superior Threads

Magnifico, So Fine



Liquid Watercolor  
[Dick Blick](#)

Golden Fluid  
Acrylics [Jerry's  
Artarama](#)

Jacquard Screen  
Printing Ink  
[Jerry's Artarama](#)

FW Acrylic Ink  
[Jerry's Artarama](#)

Sax True Flow  
Acrylic [Amazon](#)

Fabric Paint  
[Dharma Trading](#)

Generic 2 oz  
Acrylic Set  
[Amazon](#)

4oz Bottles  
[Amazon](#)

2oz Bottles  
[Amazon](#)

Catalyst Brushes  
[Jerry's Artarama](#)

Paint Markers  
[Amazon](#)

Black Fabric  
Markers [Amazon](#)

Derwent Inktense  
Blocks [Jerry's  
Artarama](#)

Derwent Inktense  
Pencils [Jerry's  
Artarama](#)

Kona Cotton -  
Black [Joannes](#)

Pre Wound  
Bobbins [Superior  
Threads](#)

Fusible Fleece  
[Amazon](#)

Petal Cotton

Linen Cotton  
Canvas  
[Spoonflower](#)

Handi Quilter Mid  
Arm [Handi  
Quilter](#)









[margaretabramshe.com](http://margaretabramshe.com)

Facebook: Abramshe Textile Arts

IG @Abramshe\_textilearts